

Americans Respond to the Impacts of Climate Change

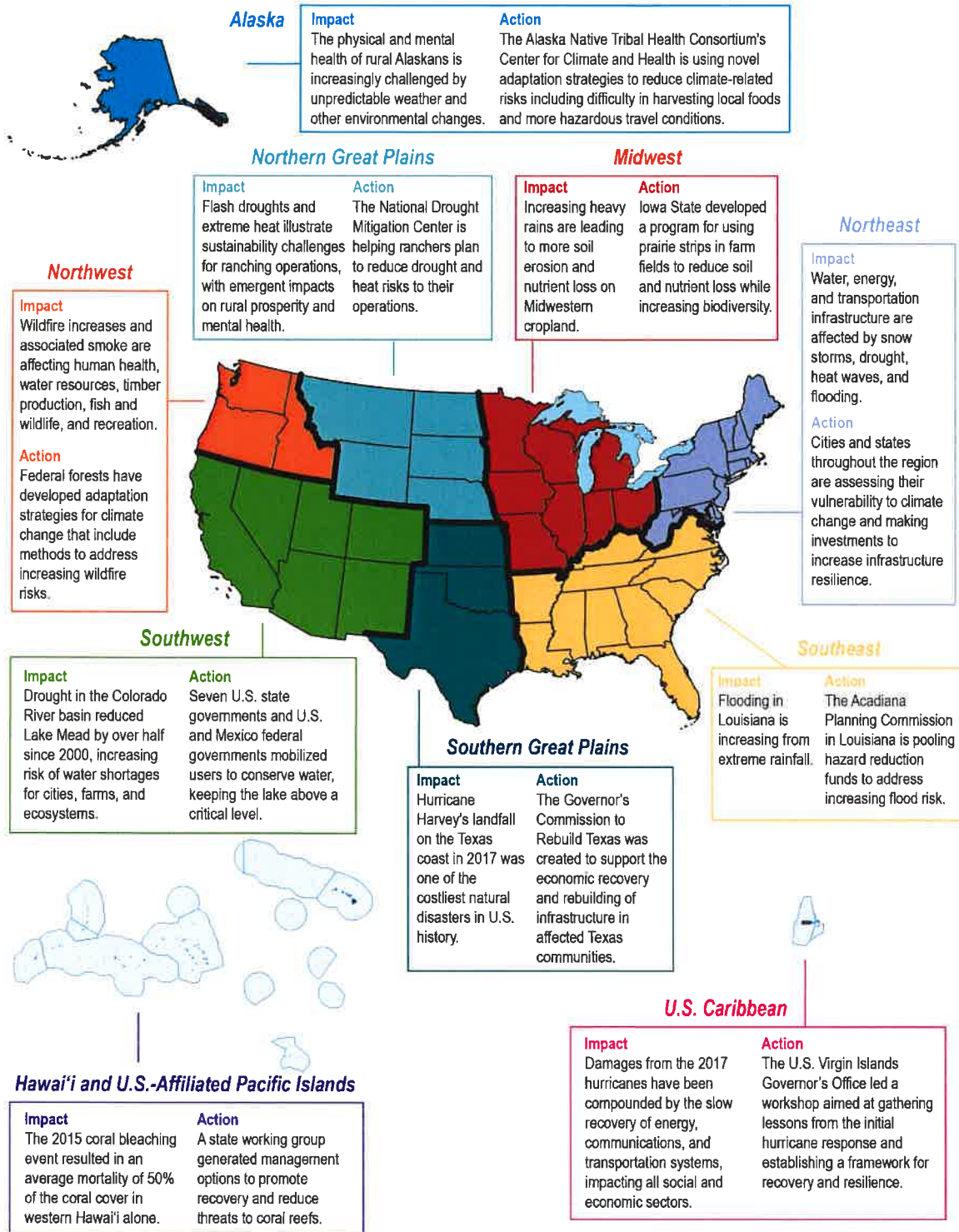


Figure 1.1: This map shows climate-related impacts that have occurred in each region since the Third National Climate Assessment in 2014 and response actions that are helping the region address related risks and costs. These examples are illustrative; they are not indicative of which impact is most significant in each region or which response action might be most effective. *Source: NCA4 Regional Chapters.*